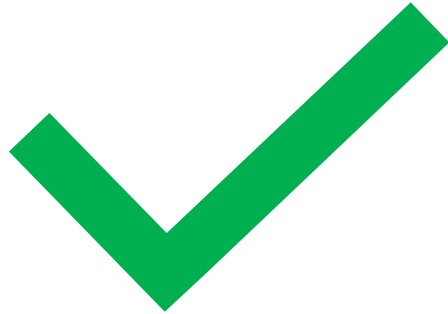


- Fabric
- Any style boot
- Trainer style
- Chunky sole

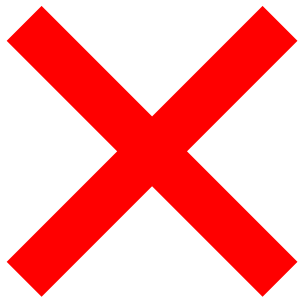




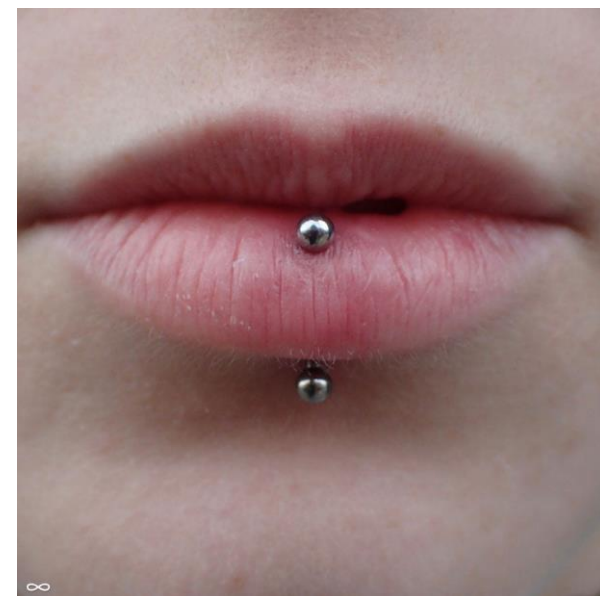
- Leather / leather looking
- Flat sole
- Black or Brown







- No facial piercings allowed





- Single studs in lower lobe only



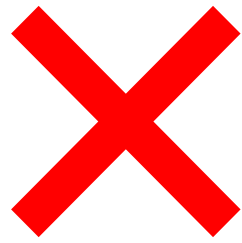


- Nail varnish must not be worn.
- Nails must be worn at a length no longer than the tip of the finger on health and safety grounds. No acrylic nails or gels.





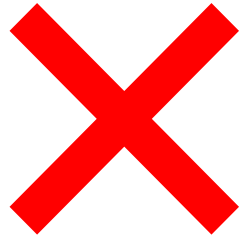
- No false eyelashes allowed
- Make-up may be worn to cover blemishes but must be of a subtle nature



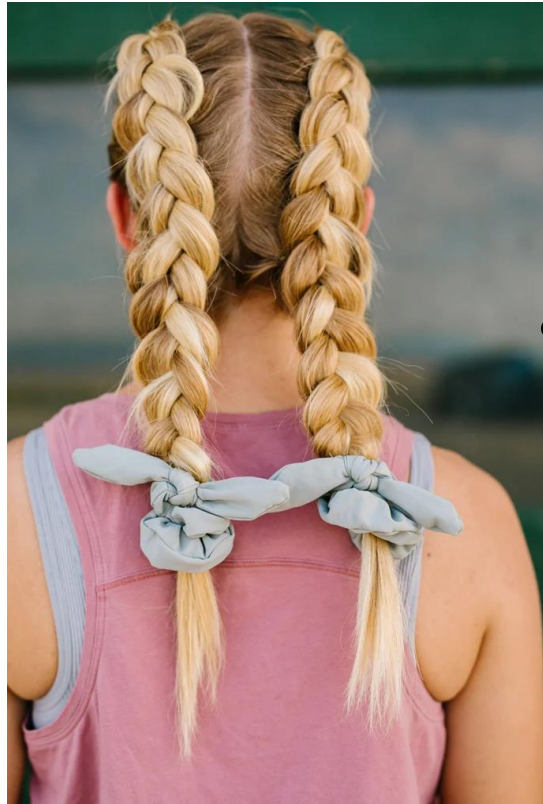
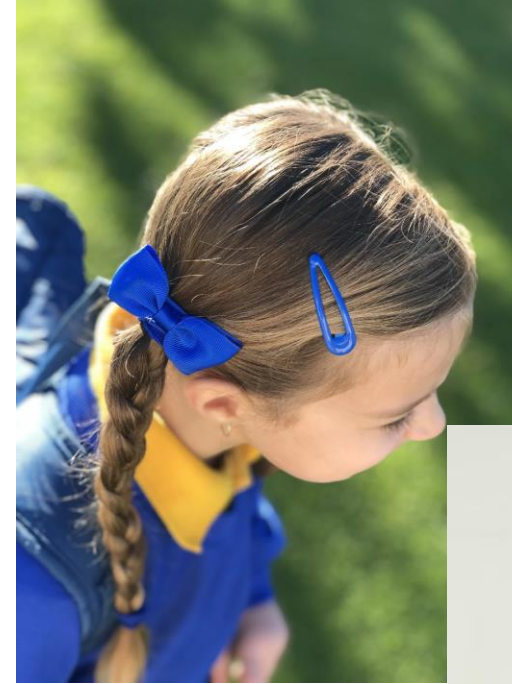
- A watch may be worn, but no other form of jewellery can be worn, including rings, bracelets and necklaces.







- Simple, plain coloured hair accessories only.
- Hair must be of natural consistent colour







Examples of full school uniform and PE kit worn correctly.

