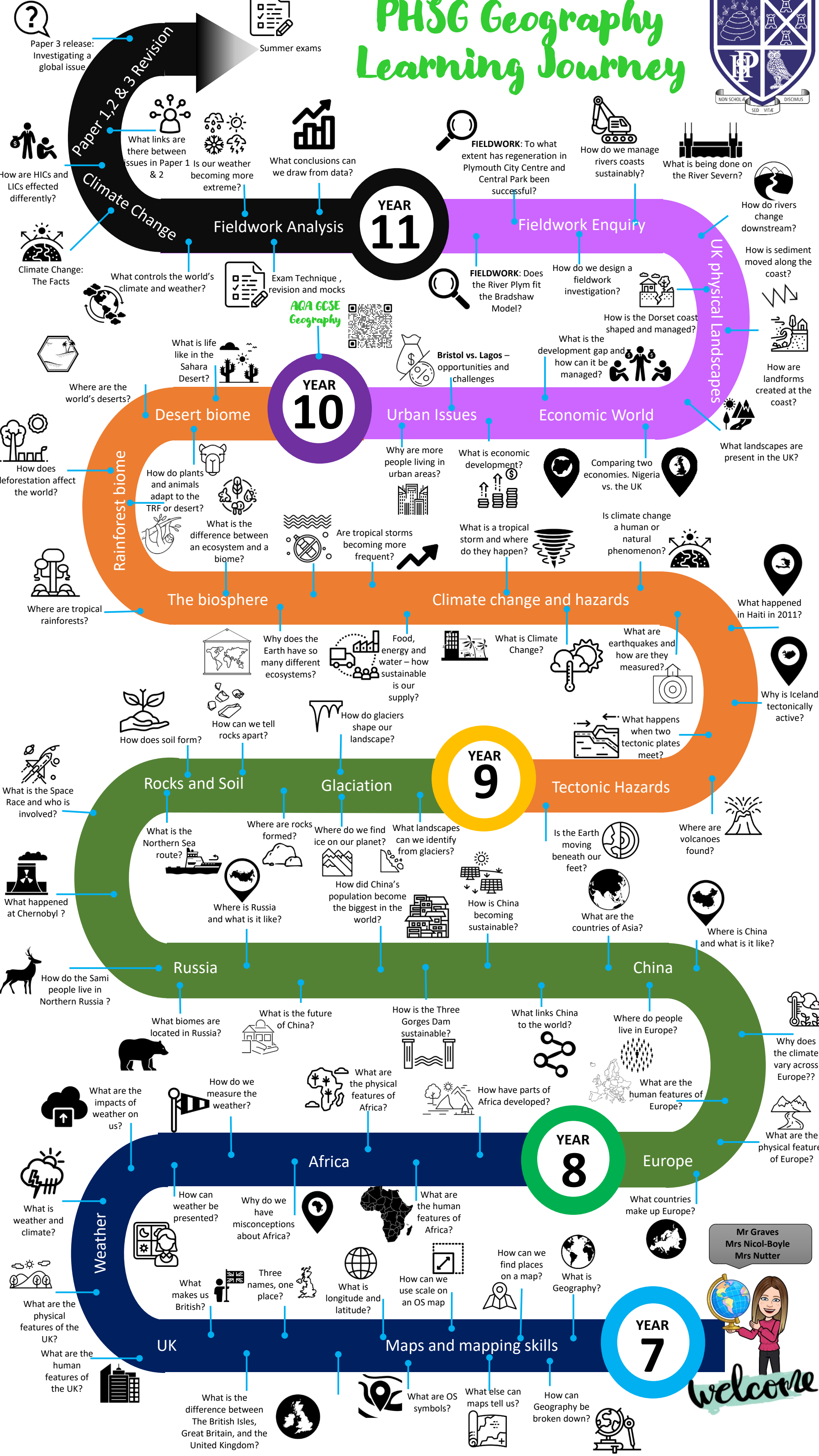
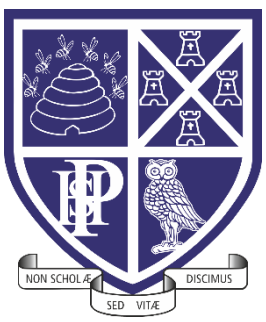


# PHSG Geography Learning Journey



Paper 3 release: Investigating a global issue

Summer exams

How are HICs and LICs effected differently?

What links are there between issues in Paper 1 & 2

Is our weather becoming more extreme?

What conclusions can we draw from data?

FIELDWORK: To what extent has regeneration in Plymouth City Centre and Central Park been successful?

How do we manage rivers coasts sustainably?

What is being done on the River Severn?

How do rivers change downstream?

How is sediment moved along the coast?

How are landforms created at the coast?

UK physical Landscapes

What landscapes are present in the UK?

YEAR 11

Fieldwork Enquiry

FIELDWORK: Does the River Plym fit the Bradshaw Model?

How do we design a fieldwork investigation?

How is the Dorset coast shaped and managed?

What is the development gap and how can it be managed?

Bristol vs. Lagos – opportunities and challenges

Urban Issues

Economic World

YEAR 10

Desert biome

How do plants and animals adapt to the TRF or desert?

What is the difference between an ecosystem and a biome?

Why are more people living in urban areas?

What is economic development?

Comparing two economies. Nigeria vs. the UK

Is climate change a human or natural phenomenon?

The biosphere

Climate change and hazards

How does deforestation affect the world?

Where are tropical rainforests?

Why does the Earth have so many different ecosystems?

Food, energy and water – how sustainable is our supply?

What is Climate Change?

What are earthquakes and how are they measured?

What happened in Haiti in 2011?

Why is Iceland tectonically active?

How does soil form?

How can we tell rocks apart?

How do glaciers shape our landscape?

What happens when two tectonic plates meet?

Rocks and Soil

Glaciation

YEAR 9

Tectonic Hazards

What is the Space Race and who is involved?

What happened at Chernobyl?

How do the Sami people live in Northern Russia?

What is the Northern Sea route?

Where are rocks formed?

Where do we find ice on our planet?

What landscapes can we identify from glaciers?

How did China's population become the biggest in the world?

How is China becoming sustainable?

Is the Earth moving beneath our feet?

Where are volcanoes found?

Russia

China

What biomes are located in Russia?

What is the future of China?

How is the Three Gorges Dam sustainable?

What links China to the world?

Where do people live in Europe?

Why does the climate vary across Europe??

What are the impacts of weather on us?

How do we measure the weather?

What are the physical features of Africa?

How have parts of Africa developed?

What are the human features of Europe?

What are the physical features of Europe?

What is weather and climate?

How can weather be presented?

Why do we have misconceptions about Africa?

What are the human features of Africa?

What countries make up Europe?

What are the physical features of the UK?

What makes us British?

Three names, one place?

What is longitude and latitude?

How can we use scale on an OS map?

How can we find places on a map?

What is Geography?

Mr Graves  
Mrs Nicol-Boyle  
Mrs Nutter

UK

Maps and mapping skills

YEAR 7

What is the difference between The British Isles, Great Britain, and the United Kingdom?

What are OS symbols?

What else can maps tell us?

How can Geography be broken down?

welcome

'Geography is the subject which holds the key to our future.' MICHAEL PALIN