

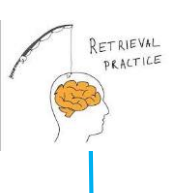
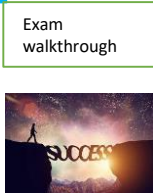
A-level Psychology Learning Journey

External Exams



Research Methods

Aims Hypothesis



The interactionist approach

Drug therapies

Psychological therapies

Psychological explanations

Biological explanations



Parasocial relationships

Virtual relationships

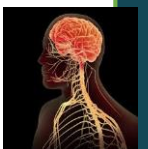


Split brain research

Plasticity and functional recovery

Ways of studying the brain

Recap of biopsychology



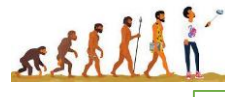
YEAR 13

Paper 3 – Issues and options in Psychology

Schizophrenia

Sampling Pilot studies
Experimental designs
Observational designs
Questionnaire construction
Variables Control
Demand characteristics and investigator effects

Classification and diagnosis



Theories of romantic relationships

Evolutionary explanations

Relationships

Factors affecting attractiveness

Duck's model of breakdown



Localisation of brain function

Ethics' BPS code of ethics
Peer review reliability *
Types of validity *
Psychology in the economy
Reliability; assessing. Features of science *

Forensics

Offender profiling

Restorative justice

Idiographic versus nomothetic research



Issues and debates

Paper 3 –

Reporting investigations *
Quantitative and qualitative data
Primary and secondary data; meta-analysis
Descriptive statistics
Presentation of data
Analysis and interpretation of...



Endogenous (internal) or exogenous (external) factors affecting sleep

Research on circadian, infradian and ultradian rhythms.

Free-will Vs determinism

Cultural bias

Gender bias

Behavioural approach

Comparison of approaches

Biological approach

Humanistic approach



Psychodynamic approach

Social learning theory

Cognitive approach

Biopsychology

Summer task

correlation; coefficients
Levels of measurement; nominal, ordinal, interval
Content analysis and coding; thematic analysis *
The eight statistical tests: Slimy cheesy chips

The nervous system, types of neurons, the fight or flight response including glands and hormones.

Explanations of phobias, depression, and OCD.

Characteristics of phobias, depression, and OCD.



Definitions of abnormality

Romani orphan studies

Cross cultural differences



Animal studies of...



Psychopathology

Treatments of phobias, depression, and OCD.



Ainsworth's strange situation

Interactional synchrony

Probability and significance; critical values
Experimental method
Observational techniques
Self-report techniques
Correlations
Content analysis, Case studies

Attachment

Role of the father



Biological approach:

Psychodynamic approach: Freud

Research methods is central to each lesson and taught in specific bi-weekly lessons throughout the course. A01 description skills about initially, then A03 evaluation.

Social influence

Dispositional explanation

Conformity to social roles

Explanations of forgetting



Conformity explanations and studies

The cognitive interview

Studies of eyewitness testimony

Memory

Paper 1 – Introductory topics in Psychology

Intro : Approaches whistle stop tour

YEAR 12

Research methods syllabus extract.

Behavioural approach:

Cognitive approach:

Links to the curriculum
Paper 1 – Biology & Maths
Paper 2 – Biology, P.E, Business Studies
Paper 3: Biology, Law

The working memory model.

The multi store model of memory

Studies of coding, capacity and duration



Nature Vs Nurture

Holism and reductionism

Nature nurture debate

Socially sensitive research

Psychological explanations

Biological explanations

Custodial sentencing: aims and psychological effects.

Applied questions

Revision

Research methods projects

Exam walkthrough

Success

External Exams